

Wingspan Series WS-6600



Specifications

Viewing Angle	170°
Input Voltage	24vDC
Watts	6 w/mod (4.8w/ft.)
Luminous Efficacy	97(lm/W)
Modules/Foot	.8/ft. fully stretched
Protection Grade	IP65
Packaging	Anti-static bag, 15 modules (18.75 ft)/bag
Warranty	5 Year (Product) / 5 Year (Labor)
Operating Temp.	-40° ~ +60 °C / -40° ~ +140 °F
Storage Temp.	-40° ~ +70 °C / -40° ~ +158 °F
Cascade	15 mods single-ended power feed (pcs) 30 mods double-ended power feed (pcs)

LM79 LM80 L70:5+ YEARS

ideal depth (from the face)

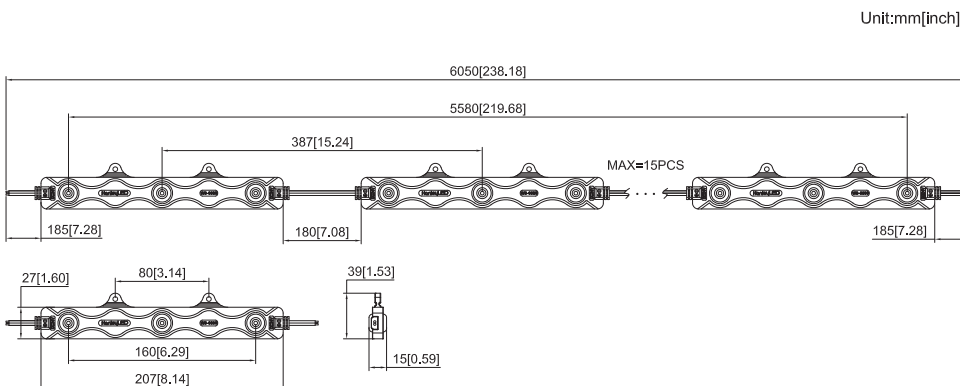
Color	Part#	Color Temp	Lumens
Pure White	HLED-WS6600	6500K	580 lm/mod (464 lm/ft.)

Features

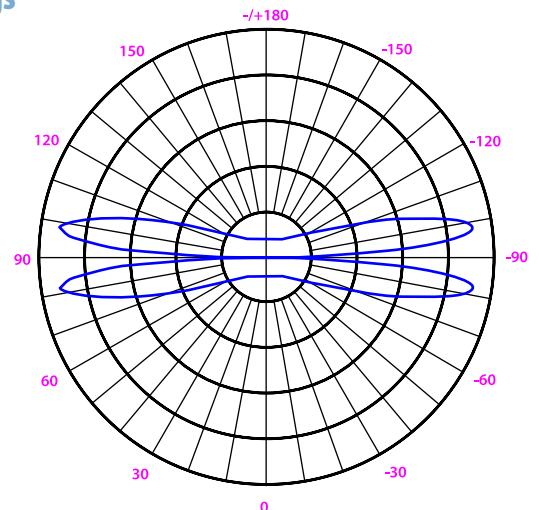
- Fast installation
 - Great for LED Retrofits and new builds!
 - No peeling or sticking modules necessary
 - Wingspan Lens Technology helps prevent Hot Spots
 - Less Labor/Less Product: Cut costs in half!
 - Ideal for double-sided pylons & Cabinets
 - Guaranteed life over 50,000hrs
 - 24" centers at 8-10" from face (may vary depending on Sign face type)
 - DIY Layout Tool at hanleyledsolutions.com
- (Available in English, Spanish, and French)

MODEL	MAX POWER SUPPLY LOAD		
	60W	100W	150W
WS-6600	10mods	16mods	25mods

Profile Drawings



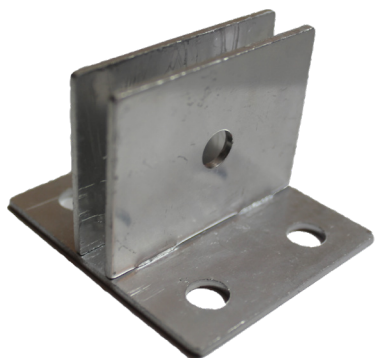
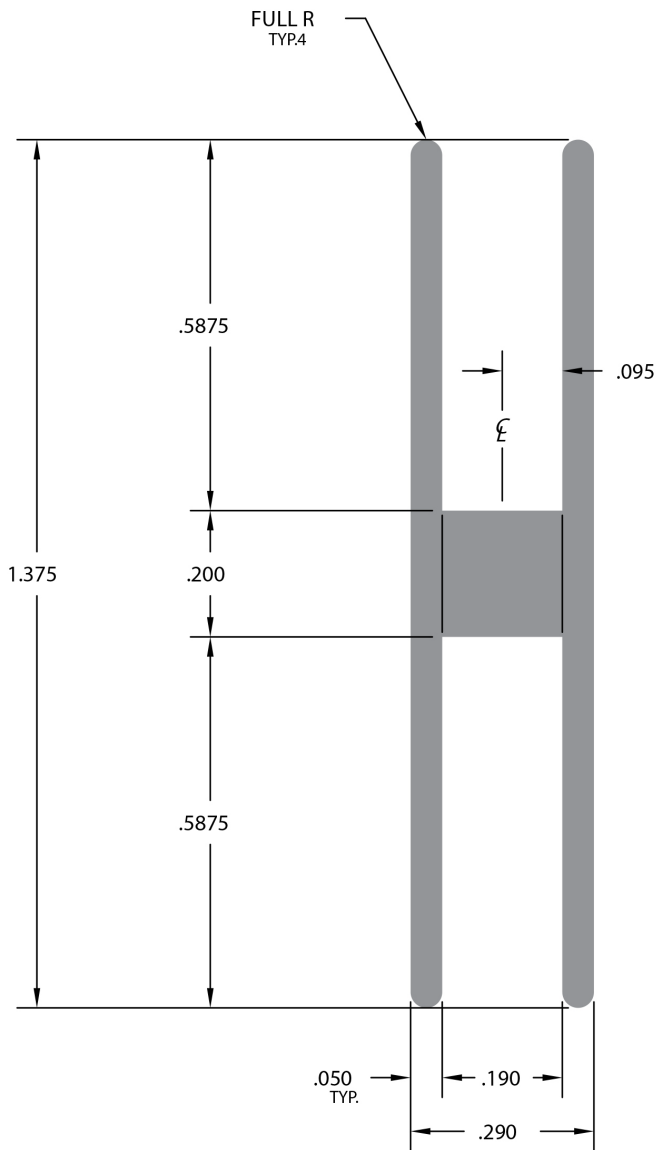
Light Distribution



EASY AS 1-2-3!

1. Slide WS6600 into 1/4" Channel of your Choice
2. Permanently fasten WS6600 with stripe of silicone
3. Zip your bars into the cabinet

LIGHT IT UP!



UB3000 (Bracket)
1/4" thickness



HLED-Extrusion

12' length, 1 3/8" wide (length can be cut to size)